

## Resurrection of Hope | S4

arr. R. George

♩=160

**A**

**B**

28

**C**

**D**

**E**

**F**

60

2

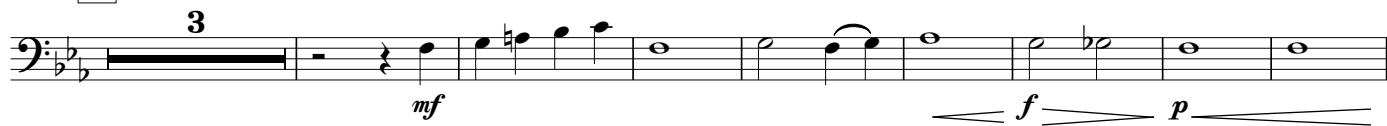
The image displays a musical score for the bass line of 'The Swan' by Charles Camille Saint-Saëns. The score is written in bass clef with a key signature of one flat (B-flat) and a 4/4 time signature. The tempo is marked as ♩=160. The score is divided into sections labeled A through F. Section A includes dynamics like *ff*, *p*, and *fp*, with a triplet of eighth notes. Section B starts with *fff* and features a triplet of eighth notes. Section C begins at measure 28 with a triplet of eighth notes and dynamics *p*, *ff*, and *fff*. Section D includes a triplet of eighth notes and dynamics *p* and *mf*. Section E starts with *ff* and includes a triplet of eighth notes. Section F begins with *mf* and *f*, followed by a triplet of eighth notes. The score concludes with a final measure marked with a double bar line and a repeat sign, with a dynamic of *sp* and a tempo marking of 2.

Low Brass 3

**G** *GLORIOUS* ♩=116



**H** *More motion* ♩=140



**I**



94

